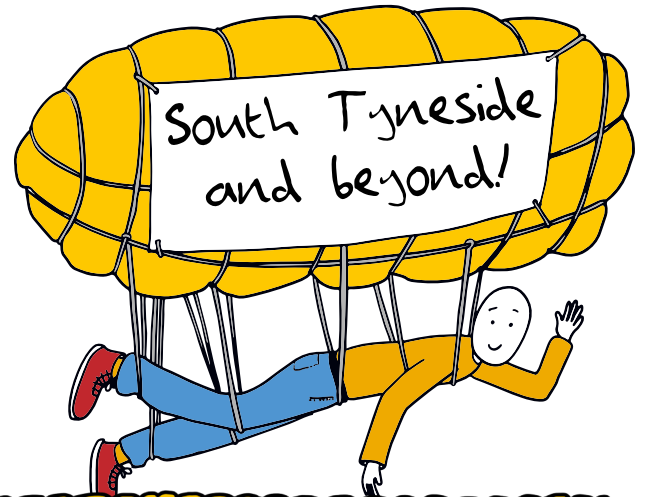


Inventor's Log Part 3

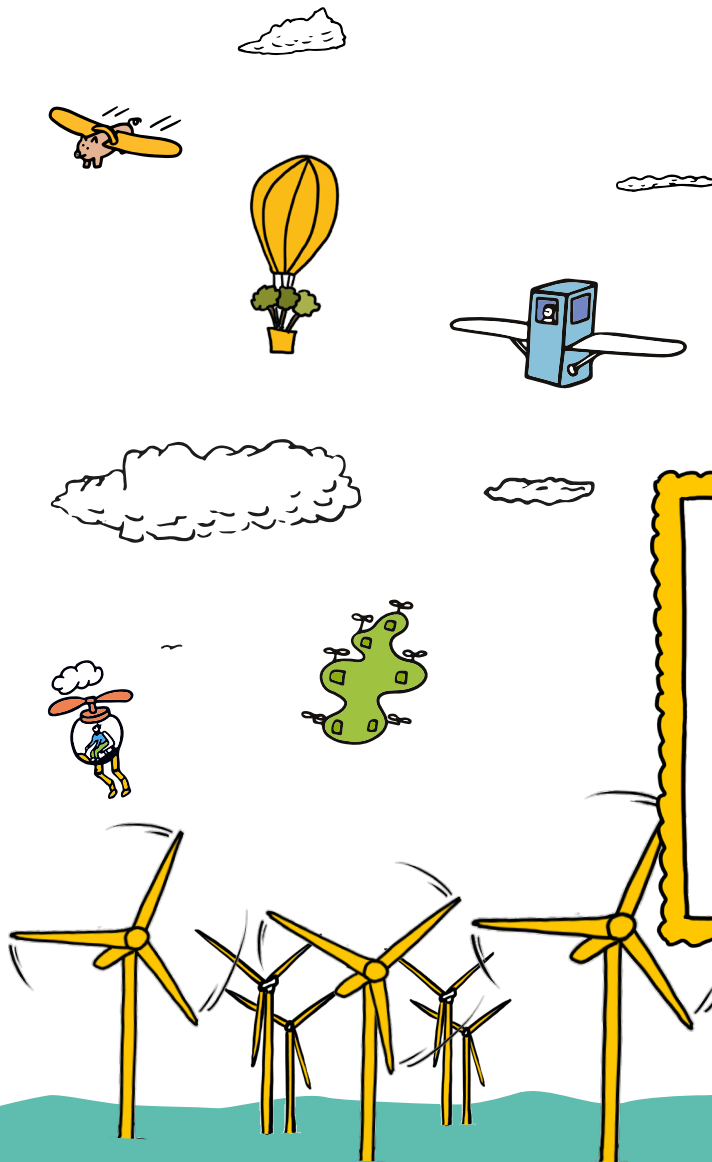
Curating your exhibition



Powering the Future



Name	_____
Year	_____
Class	_____



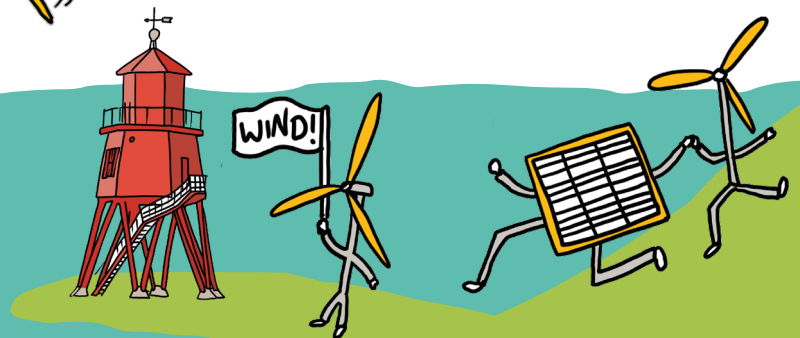
To find out more about the challenge visit
southtyneside.littleinventors.org



DOGGER BANK
WIND FARM



South Tyneside Council



You've come a long way, Little Inventor!

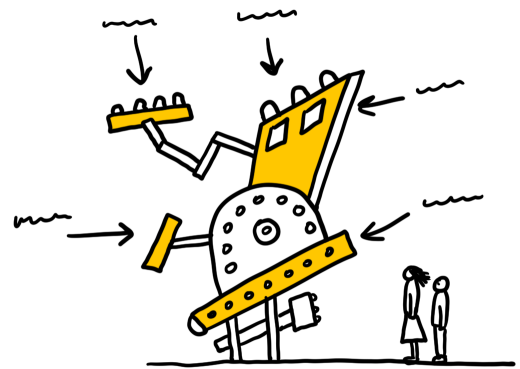


You have come up with an idea, you have drawn it, made a model and thought about how it might work. You have had a chat with one of our Magnificent Makers and your invention has been made real! How incredible is that?

You might think that all the fun bit is done, but no!

There is one thing left to do, and it's to share it with the world.

Imagine someone who has never seen your invention before. What will they think? Will they understand what it is? They might want to know how you came up with your idea, who made it, and why it matters.



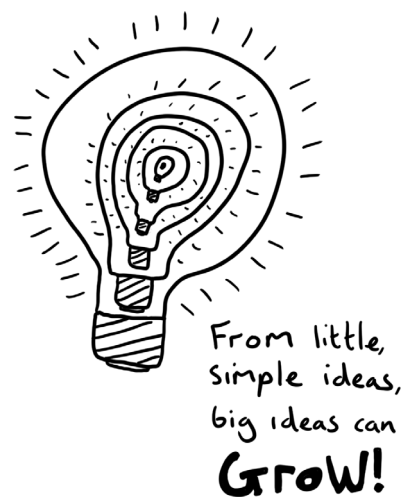
This is why it really matters how you present your invention. It's called curating and that's what museums do when they have exhibitions on. They will choose what objects or art they want to display, how they will be displayed, and what information should be included.

At our Little Inventors exhibitions we show the invention drawings, the made real objects created by our Magnificent Makers and some information about the object, maker and inventor.

This log is your guide to creating your very own exhibition!

You will get to:

- Plan your exhibition
- Draw it!
- Write an introduction
- Create exhibition labels
- Create a poster and an invitation



Plan your exhibition!



Having an exhibition is a great way to celebrate the work that you have done. And the great thing is that it's another chance to have fun and create something special.

What do you want to include in your exhibition?

Your invention of course, but you can add lots of stuff with it - it could be objects or portraits of things and people who inspired you, your sketches or other inventions you have made.

Decide where will your exhibition take place

To start, your invention will need to fit into the space you choose. But it can be an exhibition anywhere - on a shelf, in a box, a room, indoors or outdoors.

What do you want it to feel like?

You might want it to be a calm, quiet space, or somewhere colourful with lots of stuff to see and do, it's up to you!

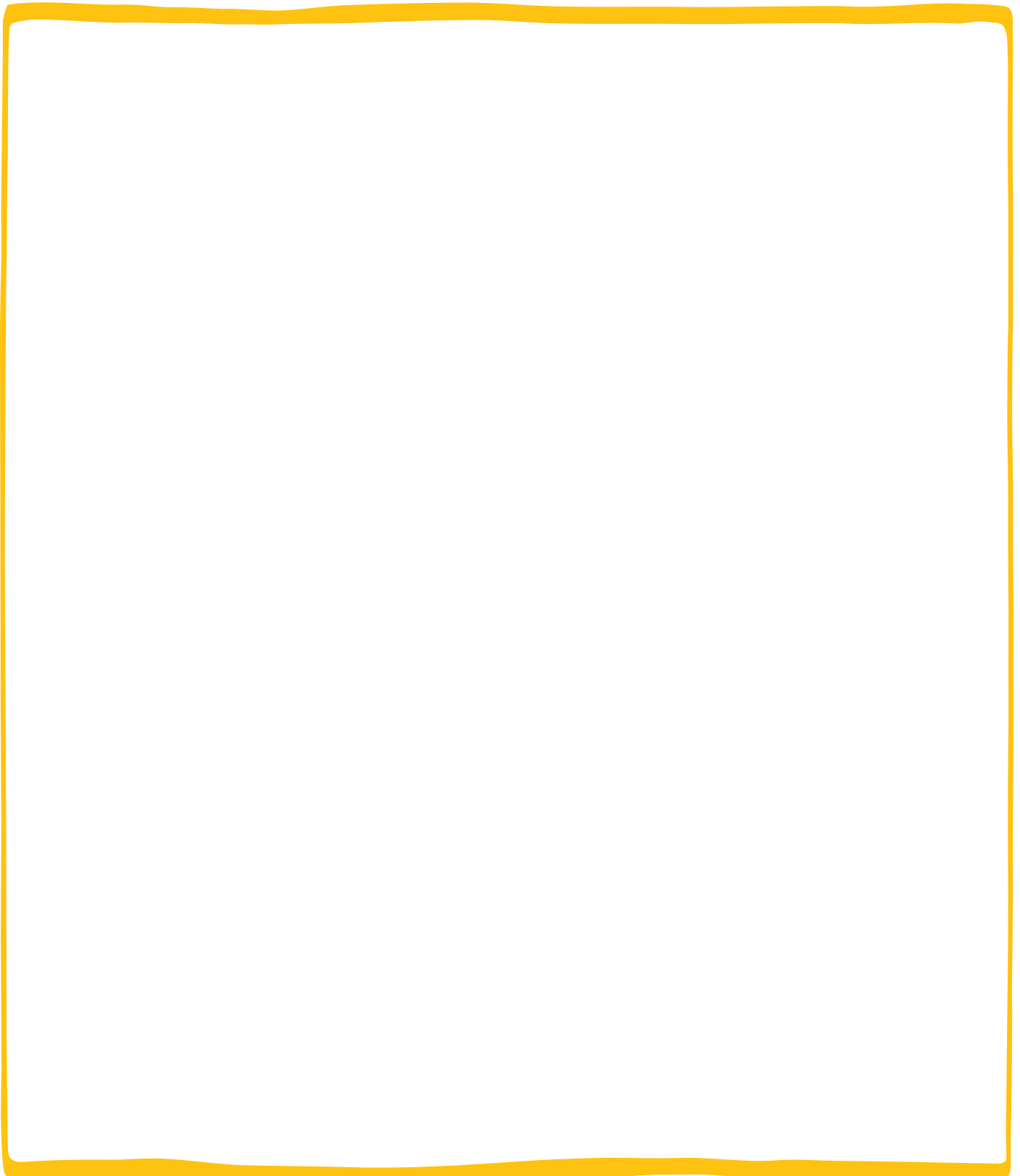
How are you going to display everything?

You might want to show off an object by placing it on a raised box on a table, or on a pedestal. What's in the background? Can you walk around it? There are lots of decisions you can make!

Draw it...



Now have a go at drawing what you think your exhibition could look like. You could decide to make a floor plan or map, or instead focus on one display.



Welcome on board!



Most exhibitions have a board at the entrance that welcomes visitors and tells them what the exhibition is about. Think of it as the history of your exhibition.

What would you want people to know?

Think about - what Little Inventors Powering the Future is, why and how you took part, what it was like to be selected, what happened next.

What was it like to meet the other inventors and the makers?

What do you think of your idea now, and how does it makes you feel?

Who do you want to thank? Your teacher, your parents, anybody else?



Break it down in simple sentences and imagine that you are talking to someone who knows nothing about you or your exhibition!

A large, empty rectangular box with a thick yellow border. The box is intended for the student to write their response to the questions above. It occupies the bottom half of the page.

Label it!



Each object that is shown in an exhibition usually has a label.

Make your own labels for the inventions, objects and drawings in your exhibition.

Write the name of your invention, a short description, and maybe other things which help understand it better, like who it is for, what it does, what inspired you.

You can print this sheet onto card, fold it in half and stand the label next to the object.

Fold here

Invention name
.....

Inventor name
.....

Materials prototype is made from
.....

Maybe you want to make a film of the invention working with more explanation about the invention?
You could film using a phone or tablet.

Think about what you might say on the film!

Tees Valley Museums has other great tips for creating your museum label!

[Top Tips for Writing Museum Labels](#)

← Click here!



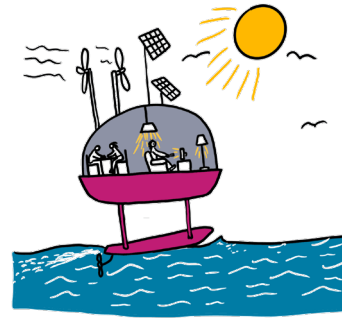
Design a poster



How will people know about your exhibition? Make a poster that will inspire them to come and see it.

Remember to include:

- The name of the exhibition
- Where and when it's happening
- If there is a special event, like a grand opening
- An image or drawing of something interesting from your exhibition



A large, empty rectangular area with a thick yellow border, intended for designing a poster.

Invite people!



If you want to make sure that certain people come, it's a good idea to send them an invitation! You can make yours here.

Things you should include:

- The name of the exhibition
- Where it's happening
- The time/s and date/s it will be open
- An image of something interesting or beautiful from your exhibition

You might want to include an RSVP! it stands for Repondez S'il Vous Plait (that's French for 'please respond'). You might need to include an email address or a phone number so people can get back to you.

Dear _____,

You are invited to the opening of my exhibition, 'I have the power,' on Saturday 11 July from 2 to 3 pm.

Come and find out all about my invention to make and use energy better and how I took part in the Little Inventors Pioneers programme.

It will take place at:
my living room, 123 Little Inventors Road, Northumberland, L15 5LI

Open Saturday 11 July until Sunday 19 July,
4 to 5 pm on weekdays and from 11 to 12 pm Saturday and Sunday.

You don't want to miss it! Please RSVP by emailing me@myemailaddress.com



Example Invitation

Cut here

Invitation Template

Space for thought!



Use this page to jot down any ideas that come to mind.