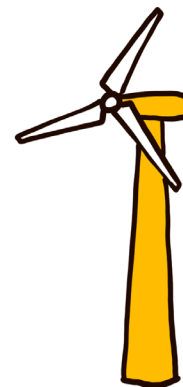
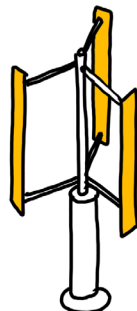
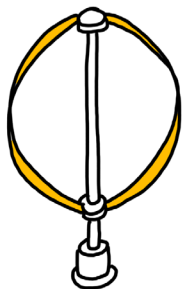
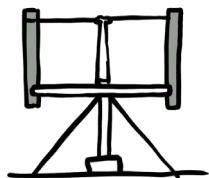
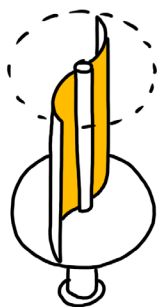


# Shape Up!

Did you know there are many different designs and shapes of wind turbines?

Engineers and inventors are still trying to figure out the best way to capture energy from the wind. Here are some examples of shapes:



Now it's your turn! In the boxes below, draw and label your new shapes of turbine. Think about where it would be located and how it would move.

Inspired by  
human movement



Inspired by an  
animal or bird



Inspired by you!

